

S&B II



MultiPost

Posts and anchorage points

Bacou-Daloz



The new product range of posts and anchorage points



MultiPost

The basic design of MultiPost is the same: MultiPost is available in different variants that are customised as per the respective purpose of application:

Pre-fabricated for different fastening bases like concrete, steel or wooden beams

- MultiPost can be used for different horizontal fall protection systems
- Anchorage point for securing 2 users simultaneously

Base structure free of deformations



Innovative insulation

- The post can be sealed permanently using thermal insulation that is available optionally. Undesired thermal bridges in the structure are thus avoided. The insulation is difficult to lose accidentally as it cannot be removed while using.

Easy to use

- all over solution for different types of fixing surfaces
concrete, steel girders, wooden beams

Enhanced safety

- Rotating anchorage eye
- Also acts as a stress indicator

Versatility

- Can be used as a support or anchorage point
- For a variety of horizontal anchorage devices
- For simultaneous use

Robust

- The posts do not deform
- Corrosion-resistant thanks to full galvanisation



MultiPost

Universal post

MultiPost-AP

Anchorage point



MultiPost – the universal support

The supports can be used to fix horizontal anchorage devices - e.g.

- Söll MultiRail,
- guide rails or
- Xenon lifeline systems

securely to them and hence to a variety of structures.

The MultiPost has been tested and approved in accordance with EN 795 Classes C and D.



MultiPost-AP – the anchorage device

These posts are additionally supplied with a 360° rotatable anchorage eye made from stainless steel. Its large opening allows two users to be anchored to it at the same time. The rotary design ensures that the eye always follows the movements of the user around the anchorage point, thereby preventing the hook from bending out of line and being at risk of fracturing. The eye also acts as a drop indicator. It shows clear deformation after a dynamic stress and must be replaced.

The MultiPost-AP has been tested and approved in accordance with EN 795 Classes A and B.





MultiPost universal support (Type 1)
 Fixing on reinforced concrete,
 galvanized steel
length: **Order no.:** (M16 / M12)
 250 mm 23767 / 23798
 350 mm 23791 / 23799
 450 mm 23797 / 23800



MultiPost universal support (Type 2)
 Fixing on steel girders,
 galvanized steel
length: **Order no.:**
 250 mm 23775
 350 mm 23776
 450 mm 23777



MultiPost universal support (Type 3)
 Fixing on wooden beams,
 galvanized steel
length: **Order no.:**
 250 mm 23783
 350 mm 23784
 450 mm 23785



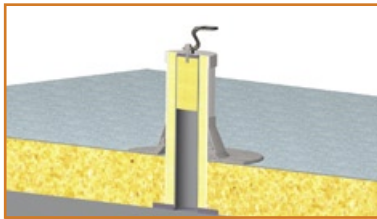
MultiPost-AP anchorage point (Type 1)
 Fixing on reinforced concrete,
 galvanized steel
length: **Order no.:** (M16 / M12)
 250 mm 23757 / 23794
 350 mm 23792 / 23795
 450 mm 23793 / 23796



MultiPost-AP anchorage point (Type 2)
 Fixing on steel girders,
 galvanized steel
length: **Order no.:**
 250 mm 23847
 350 mm 23848
 450 mm 23849



MultiPost-AP anchorage point (Type 3)
 Fixing on wooden beams,
 galvanized steel
length: **Order no.:**
 250 mm 23850
 350 mm 23851
 450 mm 23852



Thermal insulation set for MultiPost
 For permanent mounting, compatible
 with the prevailing sealing systems, Ø
 160 mm, mineral wool, PU
length: 450 mm **Order no.:** 23813



Anchorage ring
 When using MultiPost as end fixing
 point for Xenon, stainless steel
Order no.: 23769



WAP - wall anchorage point
 EN 795 compliant, for mounting on steel
 structures or on concrete, designed for
 one person. Delivery includes fastening
 material
Order no.: 23948



MAP - mast anchorage point
 EN 795 compliant, complete with all
 fastening elements, for mast diameters
 between 60 - 300 mm,
 hot-dip galvanized steel
Order no.: BS-OESE



RAP - detachable anchorage point
 EN 795 compliant, designed for
 simultaneous use by two persons,
 stainless steel
Order no.: 23876



RAP-Basic anchors stainless steel
 Supplied with white plastic socket cap
length: **Order no.:**
 100 mm 23875
 125 mm 23951
 200 mm 23952
 250 mm 23953